



CANVAS NEWS

The association of representational artists

January 2010

In this issue:

New Location	1
Christmas Dinner	2
Classifieds Update	3
Art Tip from the Artist	4

On Tuesday, January 19th at 7:00 p.m.

at Knights of Columbus Hall on Walker Rd., one block north of Tecumseh

Location Cardinal A. Stepinac Hall
1171 Walker Road

Walker Rd to Seneca (first light north of Tecumseh), turn left or right on Seneca, turn left on Turner Rd and left again into the parking lot.

New Location!

We changed our meeting place to the Knights of Columbus Hall on Walker Road. It is a banquet hall that will seat 110, they will supply reg.coffee and tea, and allow us to bring in our own bake goods for the meeting. Fee is only \$45 for general meetings and they have a fairly decent menu to select from and dinner combos run \$17 to \$22.

January Meeting

Happy New Year and we hope to see everyone at our January ARA General Meeting! For January Meeting Elaine Woods will give a presentation- Slide Show — Art in Paris.

From ARA Members to You and Your Loved Ones:

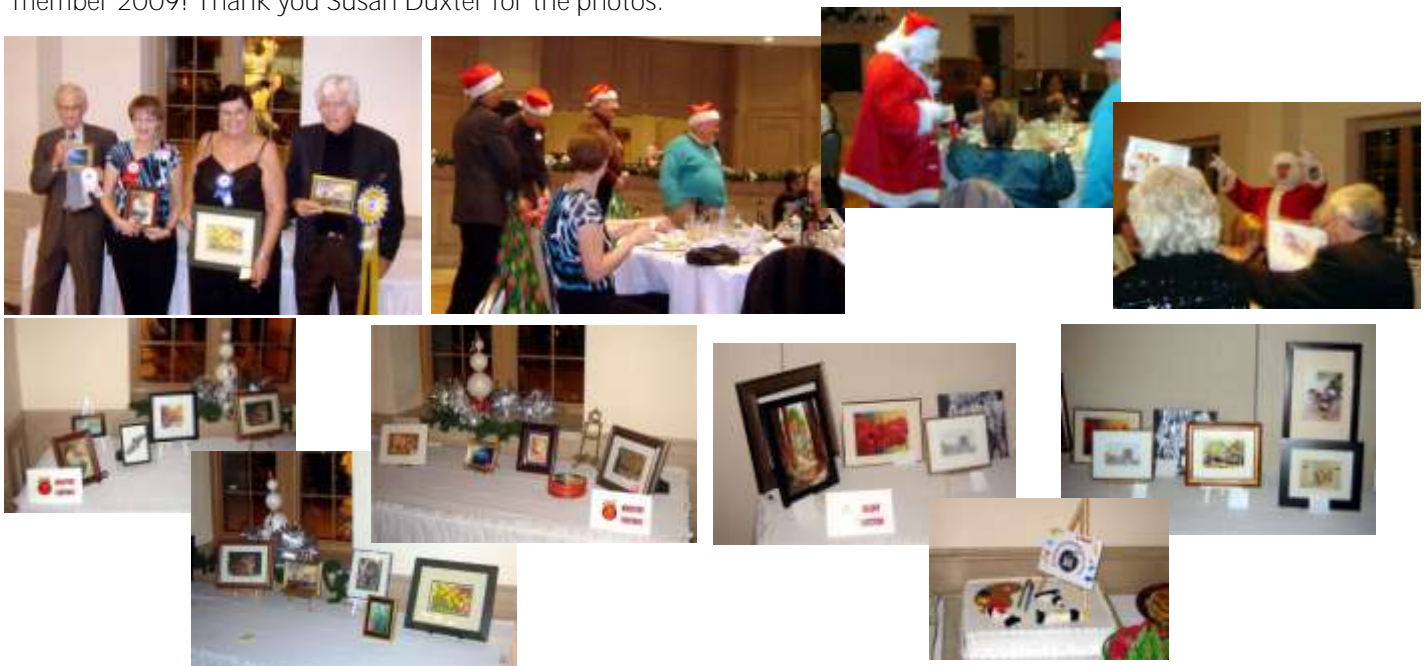
You are in our thoughts,
and we're all
hoping that you will be
enjoying better health again soon.

ARA Annual Holiday Show & Exhibition



ARA Christmas Dinner Party 2009

What a great Christmas Dinner Party! Everything went so well— amazing prizes, wonderful artwork and what a fabulous support from all of you! Thank you to all who organized, participated and made this great dinner party to remember 2009! Thank you Susan Duxter for the photos:



Silent Auction, Miniature Paintings Competition, Raffles, Christmas Carols, Home-made sweets, Table Centerpieces and so much more —

A SPECIAL THANKS TO ALL WHO CONTRIBUTED TO THIS DINNER PARTY!

ARA New Executive Board

Much Thanks to Leona MacIntyre(our past president), Francis Lucier(our past treasurer), Barbara Mahoney (Workshops/Demonstrations), Diane Clark (Secretary) for their outstanding work!

President: Elaine Woods

Vice President: Dennis Smith

Treasurer: Vicky Giroux and Heather Hooper

Grant & Development: Leona MacIntyre

Workshops & Demonstrations: Carol Ouellette and Colleen Castonguay

Social Events: April Landerkin

Membership: Ann Stefani and Shirley Preedy

Website: Susan Duxter

Secretary/Newsletter: Gulnaz Turdalieva

Show Committee: Doreen Wyatt, Trudy Dempsey, Bridget Scheuerman, Gulnaz Turdalieva

Workshops

Pouring workshop~Sue Marentette's at Art Galia photos by April Landerkin:



Classifieds Change

Executive Board Meeting made a decision to strike any fees for the classified adds. ARA members are invited to post any art related advertisements in our monthly newsletter free of charge!

If you have an announcement you would like to see published in a future issue of the CANVAS, please submit to Gulnaz Turdalieva—gulnazt@gmail.com, **no later than the end of the 2nd week of the month for that month's distribution.** (Late submissions will be included in a later edition)

Art Tip from the Artist

John Singer Sargent

“You must classify the values ...If you begin with the middle-tone and work up to the lights and down towards the darks -- so that you deal last with your highest lights and darkest darks -- you avoid false accents. “

Sargent's Painting Notes

1. Painting is an interpretation of tone. Colour drawn with a brush.
2. Keep the planes free and simple, drawing a full brush down the whole contour of a cheek.
3. Always paint one thing into another and not side by side until they touch.
4. The thicker your paint—the more your color flows.
5. Simplify, omit all but the most essential elements—values, especially the values. You must clarify the values.
6. The secret of painting is in the half tone of each plane, in economizing the accents and in the handling of the lights.
7. You begin with the middle tones and work up from it . . . so that you deal last with your lightest lights and darkest darks, you avoid false accents.
8. Paint in all the half tones and the generalized passages quite thick.
9. It is impossible for a painter to try to repaint a head where the understructure was wrong.

PALETTE: Silver White, Naples Yellow, Yellow Ochre, Ochre dew (English Red), Red Ochre, Vermillion, Ivory or Coal Black, and Prussian Blue.